



Solutions

FALL 2007 VOL. 5 NO. 1

INNOVATIVE PARTNERSHIPS FOR EDUCATION

Seven Districts Win 2007-2008 Standards Implementation Grants



Weymouth Township, Stafford Township, Plainfield and South Bound Brook school districts and the Sussex County Educational Services Commission. They join the ranks of the many districts since 1997 to which NJ SSI has provided \$2,856,677.

Each district is required to match funds it receives. In addition, grantees are expected to purchase exemplary instructional materials, provide high-level professional development to teachers and form teams for education-related problem solving.

Momentum continues to build as New Jersey Statewide Systemic Initiative's Standards Implementation Grants program enters its tenth year. NJ SSI has awarded \$65,000 to seven school districts for the 2007-2008 academic year. The recipients of sums ranging from \$5,000 to \$15,000 are **the Warren County Special Services, Montclair,**

From its inception, the Standards Implementation Grants program has helped actualize New Jersey Core Curriculum Content Standards in mathematics and science. The funds have been used to address the multiple challenges inherent in standards-based education: more effective instructional techniques on the part of teachers; higher academic achievement by students; and improved methods of assessment of students and programs. The NJ SSI team is doing its part to turn today's youth into better-educated adults. We encourage all districts to help raise the standards bar, and invite you to apply for funding via Request for Proposals (RFP), 2008-2009.

STANDARDS IMPLEMENTATION GRANTS 2007-2008 AWARDEES

COUNTY	DISTRICT	AREA	LEVEL
Sussex	Sussex County Educational Services Commission	Science	K-5
Warren	Warren County Special Services School District	Science	K-4
Essex	Montclair School District	Mathematics	K-12
Atlantic	Weymouth Township School District	Science	K-5
Ocean	Stafford Twp. School District	Science	1-6
Union	Plainfield School District	Mathematics	K-5, 6-8
Somerset	South Bound Brook School District	Mathematics	6-8

2007 –2008 Partnership Program: A Boon To Strategic Planning Expected

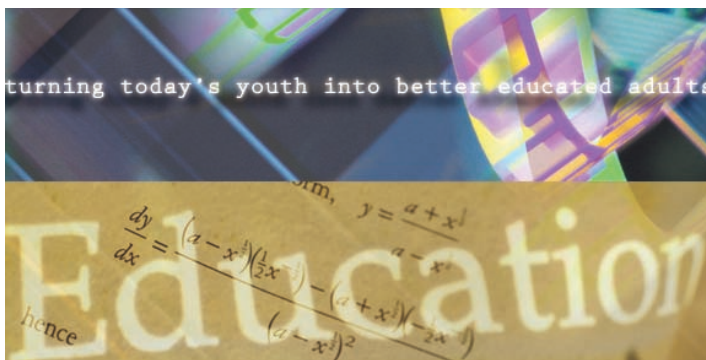
NJ SSI has once again launched its annual **Partnership Program for Excellence in Math, Science and Technology**. The objective is to help districts develop strategic plans for aligning math and science curriculum with state standards. As in prior years, NJ SSI will assist school leadership teams by providing intensified, 12-day programs of professional development. Teachers will learn ways to better-evaluate existing student achievement patterns. The program will then help them plan appropriate improvement strategies to meet Adequate Yearly Progress standards set through the No Child Left Behind Act.

Student academic improvement resulting from previous Partnership Program efforts has been measurable, especially for districts that subsequently received Standards Implementation Grants. In the five-year period ending with school year 2005 – 2006, relevant student proficiency tests improved an average of 28.5%. This is more than twice the rate of improvement (13.9%) of other districts.

External evaluations of the program have also revealed evidence of its positive impact on district teachers, especially in terms of: Providing access to greater resources and knowledge of funding opportunities, partnerships, and expertise; offering guidance in standards-based curricular selection and implementation; facilitating implementation of strategic plans for educational reform; and planning for future professional development, data analysis, and integration of technology, administrative and materials support.

It's not too late for you to help yourself and generations of students to come. The final registration deadline is December 3, 2007. For a registration packet, please contact one of the five participating regional centers. We invite your participation in this valuable program.

RELEVANT STUDENT PROFICIENCY TESTS IMPROVED AN AVERAGE OF 28.5%. THIS IS MORE THAN TWICE THE RATE OF IMPROVEMENT (13.9%) OF OTHER DISTRICTS.



2007 - 2008 Program Schedule

The College of New Jersey
**January 16, 2008, February 13, 2008,
March 19, 2008, April 16, 2008 ***
(609) 771-3332

County College of Morris
**November 29, 2007, January 16, 2008,
February 12, 2008, April 10, 2008 ***
(973) 328-5378

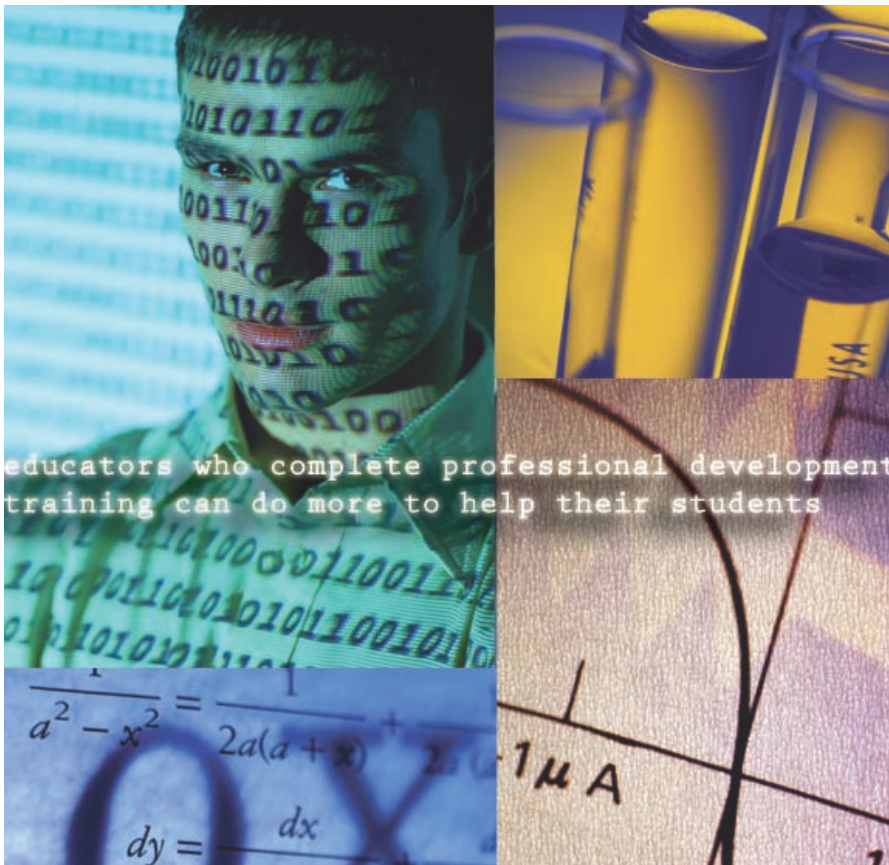
Montclair State University
**November 14, 2007, December 5, 2007,
January 9, 2008, February 6, 2008 ***
(973) 655-7753

Rowan University
**December 6, 2007, December 7, 2007,
February 7, 2008, May 1, 2008 ***
(856) 256-4827

Rutgers University
**November 30, 2007, January 18, 2008,
February 15, 2008, April 11, 2008 ***
(732) 932-0124, ext. 8155

*** All programs include additional summer components.**

MSP Grants: Funding 6, Training 350, Improving Achievement For All



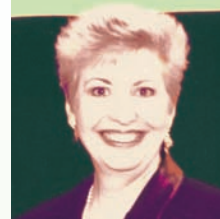
educators who complete professional development training can do more to help their students

Stevens Institute of Technology, Richard Stockton College of New Jersey, and Montclair State, Rowan, Rutgers and William Paterson Universities have been awarded nearly \$4 million in state Mathematics and Science Partnership (MSP) program grants this year. The New Jersey Department of Education awarded these funds to the six professional development centers in keeping with No Child Left Behind Act objectives.

Provided by the U.S. Department of Education through NJ DOE, the grants are being used to financially support partnerships between institutions of higher education and high-need school districts. Funding is earmarked for efforts by math, science, engineering and technology college faculty members to help elementary and secondary school teachers in these disciplines. Approximately 350 teachers, grades 3-8, are being given the opportunity to enhance their content knowledge and skills.

The assumption behind the funding is that educators who complete professional development training can do more to help their students. Higher achievement in math and science by every student is, of course, the ultimate goal; the ripple affect it launches may lead to a lifetime of advantages for each child. According to Commissioner of Education Lucille E. Davy, "The evidence is clear that young people who are proficient in mathematics and science are in greater demand than ever."

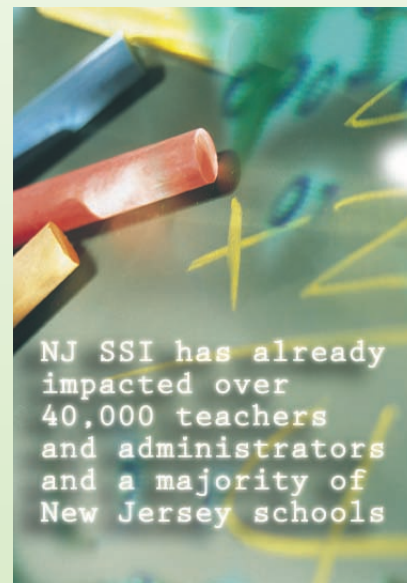
The partnership grant program aims to: improve the academic achievement of students in mathematics and science; improve teachers' subject content knowledge, skills and classroom practices; and increase the number of highly qualified teachers in mathematics and science.



From the Director

Deborah H. Cook
Ed.D.

The New Jersey Statewide Systemic Initiative has made great strides since its 1993 launch by the National Science Foundation. We look back with pride, and ahead with excitement, at the challenges associated with strengthening areas of education in our state. With a focus on science, technology, engineering and mathematics (STEM) disciplines, NJ SSI has already impacted over 40,000 teachers and administrators and a majority of New Jersey schools.



The mission moves forward this year, armed with financial resources (Standards Implementation Grants), professional development activities (Lenses on Learning and Dynamic Classroom Assessment), planning services (Partnership Program for Excellence in Math, Science and Technology) and much more. NJ SSI, operating as a unique partnership of schools, districts, universities, science centers and businesses, will continue to work in support of the state's agenda for improved education for all students.

CALENDAR OF EVENTS

Mark the Dates

For additional information about these events and other professional development opportunities, please visit the News and Events section of the NJ SSI web site at: <http://njssi.rutgers.edu>

NOVEMBER

11/1
Introduction to Hands-on Astronomy 1: Moon & Solar System (Grades 5-12)
New Jersey Astronomy Center

11/1
The Laboratory Safety Institute's One-Day Safety Training for Middle School Teachers
County College of Morris

11/1
Using Geometer's Sketchpad Grades 6-8 (course# 110107) (Grades 6-8)
CMSCE, Rutgers University

11/2
Mathematics Test PRep for the NJ ASK 3 and NJ ASK 4 (course# 110207) (Grades 3-4)
CMSCE, Rutgers University

11/5
Mathematics Test Prep for the HSPA (course# 110507) (Grades 9-12)
CMSCE, Rutgers University

11/5, 11/6
Science GEPA (Grades 5-8)
Rowan University

11/6
The Art of Teaching Science (Grades 1-2)
County College of Morris

11/7
Cranberry Harvest (Grades K-5)
The College of New Jersey

11/8
CPO Science's All New Focus on an Integrated Middle School Science Series - Earth, Life, and

Physical Science (Grades 5-8)
Rowan University

11/12
How Your Students Can Learn to Love Measurement and Fractions (Grades 3-4)
CMSCE, Rutgers University

11/13, 11/27
MathNJ ASK and GEPA Assessment (Grades 3-7)
Rowan University

11/14
Engineering is Elementary: Leaf Catches the Wind (Grades 3-5)
The College of New Jersey

11/14
Project Astro: Learning about Light Through the Learning Cycle (Grades 5-12)
The College of New Jersey

11/16
Strategies to Prepare Special Education Students for the HSPA (Grades 9-12)
CMSCE, Rutgers University

11/20
Mathematics Test Prep for the NJ ASK 5 and NJ ASK 6 (course# 112007) (Grades 5-6)
CMSCE, Rutgers University

11/27
CPO Science - Physics a First Course for High School Teachers
County College of Morris

11/27
Explore the Solar System (Grades K-4)
New Jersey Astronomy Center

11/27
Earth Science & Engineering 1 - Earthquakes

CIESE, Stevens Institute of Technology

11/28
State Science Assessment Update (Grades 5-8 GEPA)
The College of New Jersey

11/28
Introduction to Hands-on Astronomy 2: Stars & Galaxies (Grades 5-12)
New Jersey Astronomy Center

11/28
Science Test Preparation - NJ End-of-Course Biology Assessment and HSPA (course# 112807) (Grades 9-12)
CMSCE, Rutgers University

11/29
Mathematics Test Prep for the NJ ASK(7/8) (course# 112907) (Grades 7-8)
CMSCE, Rutgers University

11/29
The Art of Teaching Science (Grades 3-4)
County College of Morris

11/29
Multidisciplinary Projects in Science & Literacy (Grades K-5)
CIESE, Stevens Institute of Technology

DECEMBER

12/4
Literature and Math (course #120407) (Grades K-4)
CMSCE, Rutgers University

12/5
Everyday Mathematics Users/Second Edition/A Focus on Special Education
County College of Morris

12/10
Gravity and Orbits in the Solar

System (Grades 5-12)
New Jersey Astronomy Center

12/12
Penguins and Eggs and Elephants, Oh, My, !
The College of New Jersey

JANUARY

1/10
Real World Problems in Life Science (Grades 6-8)
CIESE, Stevens Institute of Technology

1/11
Physical Science & Eng. 1: Properties of Water (Grades 6-8)
CIESE, Stevens Institute of Technology

1/15
Differentiating Instruction in Math for Special Education (course# 011508) (Grades K-8)
CMSCE, Rutgers University

1/16
Real World Problems in Environmental Science (Grades 6-8)
CIESE, Stevens Institute of Technology

1/16
Differentiated Instruction in the Math Classroom: Challenging All Students (Grades K-5)
Rowan University

1/30
Preparing for the Technology Education PRAXIS Test (Grades 7-12)
The College of New Jersey



INNOVATIVE
PARTNERSHIPS
FOR EDUCATION

**Rutgers, The State University
of New Jersey**
640 Bartholomew Rd.
Piscataway, NJ 08854-8003

Tel 732-445-2241
Fax 732-445-2848
<http://njssi.rutgers.edu>